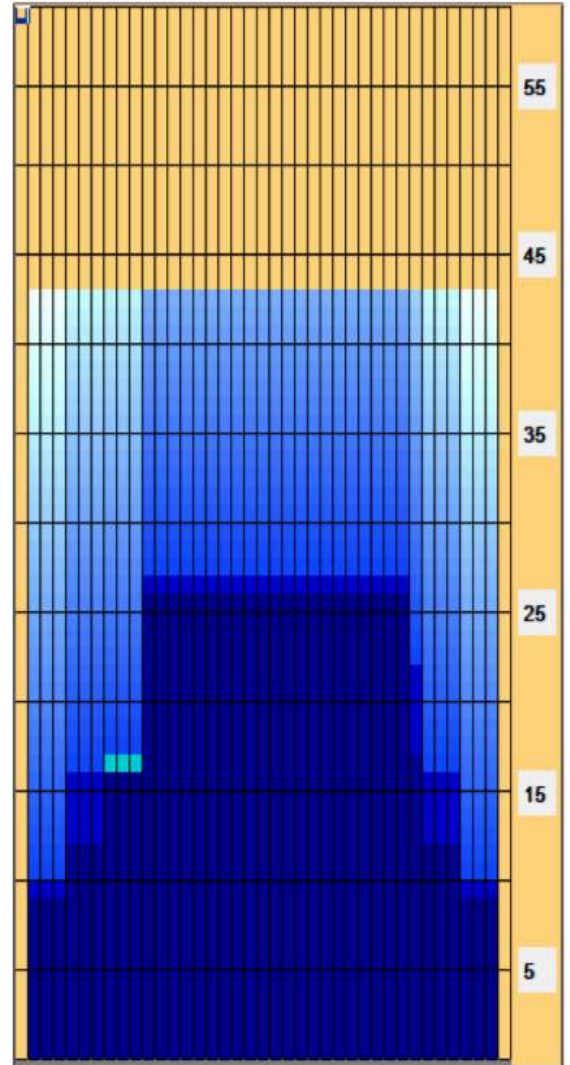


Oil Pattern Distance: **43 Feet** Reverse Brush Drop: **33 Feet** Oil Per Board: **50 uL**
 Forward Oil Total: **16.45 mL** Reverse Oil Total: **13.75 mL** Volume Oil Total: **30.2 mL**
 Forward Boards Crossed: **329 Boards** Reverse Boards Crossed: **275 Boards** Total Boards Crossed: **604 Boards**

	Start	Stop	Loads	Speed	Crossed	Start	End	Feet	T.Oil
1	2L	2R	2	14	74	0.0	1.9	1.9	3700
2	2L	2R	3	18	111	1.9	9.5	7.6	5550
3	5L	5R	1	18	31	9.5	12.0	2.5	1550
4	8L	8R	2	18	50	12.0	17.1	5.1	2500
5	11L	9R	3	22	63	17.1	26.4	9.3	3150
6	2L	2R	0	22	0	26.4	34.0	7.6	0
7	2L	2R	0	26	0	34.0	43.0	9.0	0

Conditioner:
Type In or Select One

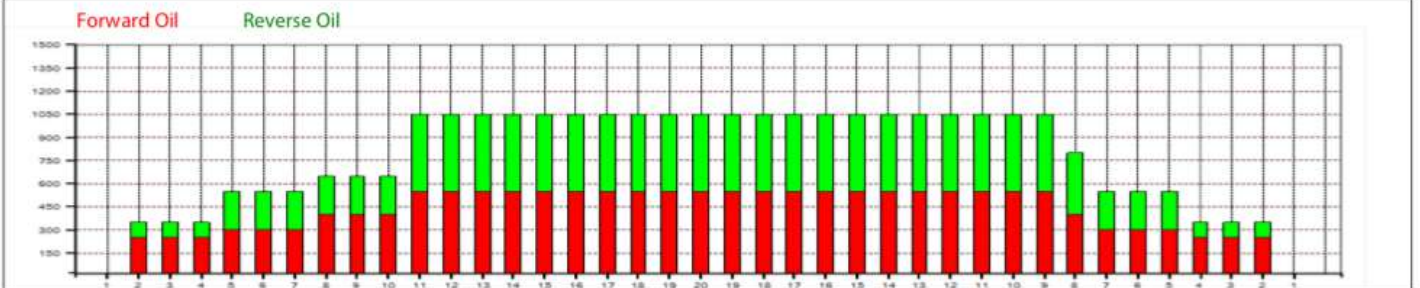
 TransferType:
Type In or Select One



	Start	Stop	Loads	Speed	Crossed	Start	End	Feet	T.Oil
1	2L	2R	0	22	0	43.0	27.0	-16.0	0
2	11L	9R	2	18	42	27.0	21.9	-5.1	2100
3	11L	8R	3	14	66	21.9	16.0	-5.9	3300
4	5L	5R	3	14	93	16.0	10.1	-5.9	4650
5	2L	2R	2	10	74	10.1	7.3	-2.8	3700
6	2L	2R	0	10	0	7.3	0.0	-7.3	0

Forward
Reverse
Combined
Buff

Item	3L-7L:18L-18R	8L-12L:18L-18R	13L-17L:18L-18R	18L-18R:17R-13R	18L-18R:12R-8R	18L-18R:7R-3R
Description	Outside Track:Middle	Middle Track:Middle	Inside Track:Middle	Middle: Inside Track	Middle:Middle Track	Middle:Outside Track
Track Zone Ratio	2.23	1.3	1	1	1.05	2.23



2019 PBA CARMEN SALVINO 44



Oil Pattern Distance:	44 Feet	Reverse Brush Drop:	35 Feet	Oil Per Board:	50 uL
Forward Oil Total:	18.2 mL	Reverse Oil Total:	11.2 mL	Volume Oil Total:	29.4 mL
Forward Boards Crossed:	364 Boards	Reverse Boards Crossed:	224 Boards	Total Boards Crossed:	588 Boards

	Start	Stop	Loads	Speed	Crossed	Start	End	Feet	T.Oil
1	2L	2R	2	10	74	0.0	1.4	1.4	3700
2	2L	2R	2	14	74	1.4	5.3	3.9	3700
3	2L	2R	2	18	74	5.3	10.4	5.1	3700
4	9L	7R	2	18	50	10.4	15.5	5.1	2500
5	11L	10R	2	18	40	15.5	20.6	5.1	2000
6	13L	13R	2	22	30	20.6	26.8	6.2	1500
7	15L	15R	2	22	22	26.8	33.0	6.2	1100
8	2L	2R	0	22	0	33.0	40.0	7.0	0
9	2L	2R	0	26	0	40.0	44.0	4.0	0

Navigation: Forward Reverse More

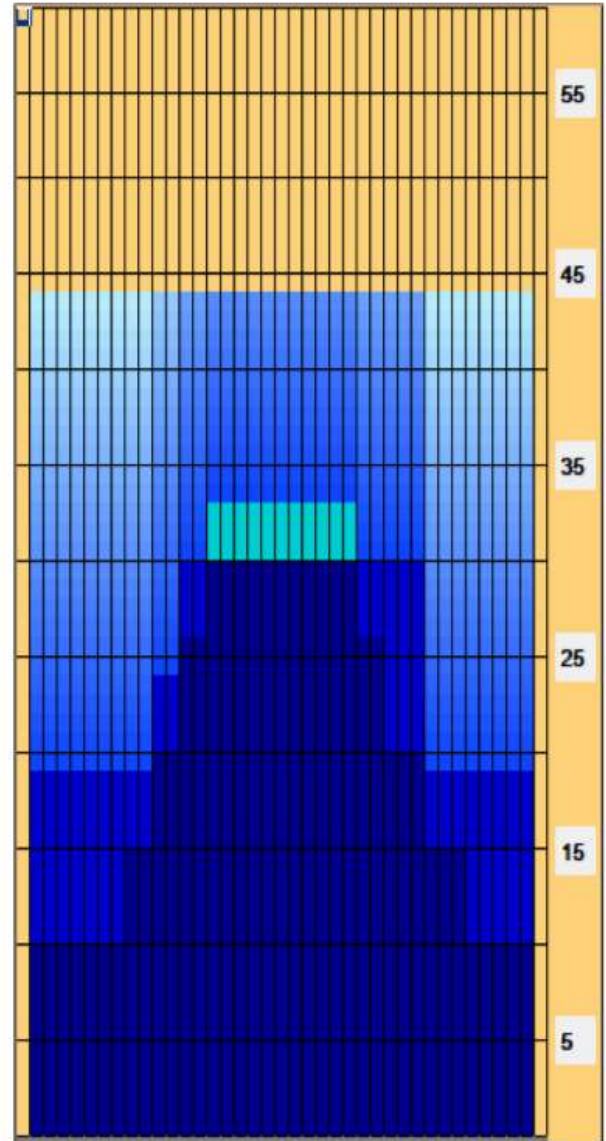
	Start	Stop	Loads	Speed	Crossed	Start	End	Feet	T.Oil
1	2L	2R	0	30	0	44.0	30.0	-14.0	0
2	13L	10R	2	22	36	30.0	23.8	-6.2	1800
3	11L	10R	2	18	40	23.8	18.7	-5.1	2000
4	2L	2R	2	18	74	18.7	13.6	-5.1	3700
5	2L	2R	2	14	74	13.6	9.7	-3.9	3700
6	2L	2R	0	14	0	9.7	0.0	-9.7	0

Navigation: Forward Reverse More

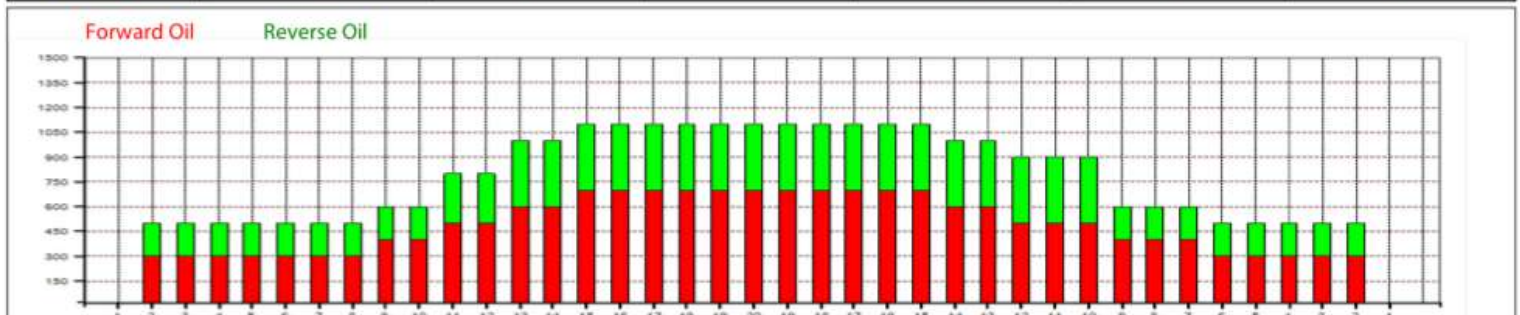
Conditioner:
Type In or Select One

TransferType:
Type In or Select One

- Forward
- Reverse
- Combined
- Buff



Item	3L-7L:18L-18R	8L-12L:18L-18R	13L-17L:18L-18R	18L-18R:17R-13R	18L-18R:12R-8R	18L-18R:7R-3R
Description	Outside Track:Middle	Middle Track:Middle	Inside Track:Middle	Middle: Inside Track	Middle:Middle Track	Middle:Outside Track
Track Zone Ratio	2.2	1.67	1.04	1.04	1.41	2.12



Oil Pattern Distance: 45 Feet Reverse Brush Drop: 38 Feet Oil Per Board: 50 uL
 Forward Oil Total: 16.25 mL Reverse Oil Total: 10 mL Volume Oil Total: 26.25 mL
 Forward Boards Crossed: 325 Boards Reverse Boards Crossed: 200 Boards Total Boards Crossed: 525 Boards

	Start	Stop	Loads	Speed	Crossed	Start	End	Feet	T.Oil
1	2L	2R	2	14	74	0.0	1.9	1.9	3700
2	7L	7R	1	18	27	1.9	4.4	2.5	1350
3	8L	8R	4	18	100	4.4	14.6	10.2	5000
4	11L	11R	4	18	76	14.6	24.8	10.2	3800
5	15L	13R	2	18	26	24.8	29.9	5.1	1300
6	15L	15R	2	22	22	29.9	36.1	6.2	1100
7	2L	2R	0	22	0	36.1	40.0	3.9	0
8	2L	2R	0	30	0	40.0	45.0	5.0	0

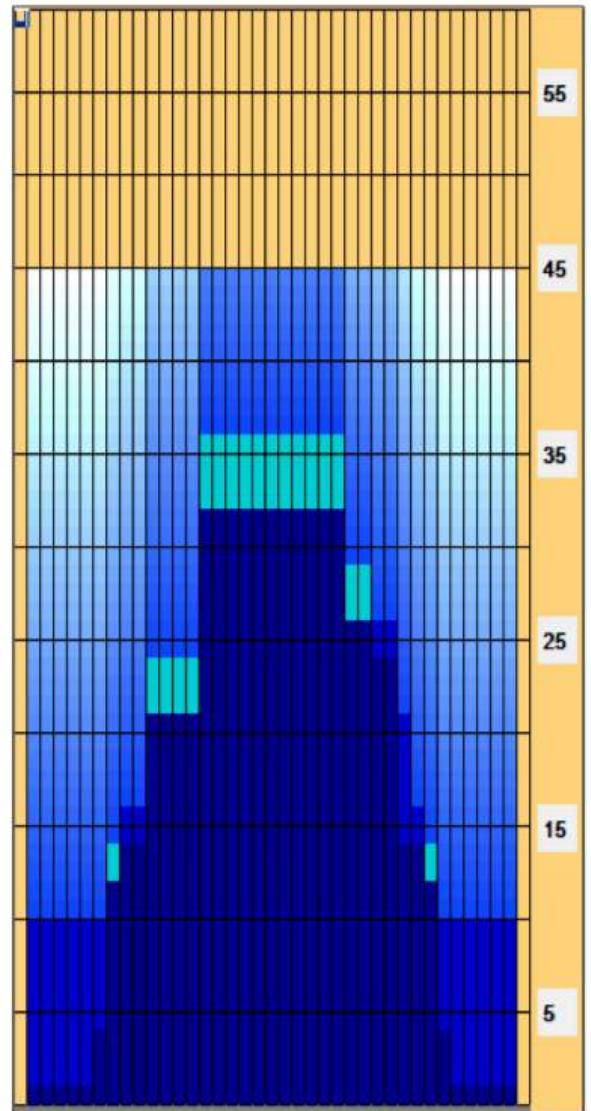
Navigation: Forward Reverse More

	Start	Stop	Loads	Speed	Crossed	Start	End	Feet	T.Oil
1	2L	2R	0	30	0	45.0	32.0	-13.0	0
2	15L	15R	2	22	22	32.0	25.8	-6.2	1100
3	15L	11R	2	18	30	25.8	20.7	-5.1	1500
4	11L	10R	2	18	40	20.7	15.6	-5.1	2000
5	9L	9R	2	14	46	15.6	11.7	-3.9	2300
6	8L	8R	1	14	25	11.7	9.8	-1.9	1250
7	2L	2R	1	14	37	9.8	7.9	-1.9	1850
8	2L	2R	0	14	0	7.9	0.0	-7.9	0

Navigation: Forward Reverse More

Conditioner:
Type In or Select One
 TransferType:
Type In or Select One

- Forward
- Reverse
- Combined
- Buff



Item Description	3L-7L:18L-18R Outside Track:Middle	8L-12L:18L-18R Middle Track:Middle	13L-17L:18L-18R Inside Track:Middle	18L-18R:17R-13R Middle: Inside Track	18L-18R:12R-8R Middle:Middle Track	18L-18R:7R-3R Middle:Outside Track
Track Zone Ratio	7.81	1.92	1.15	1.07	1.76	7.81

